

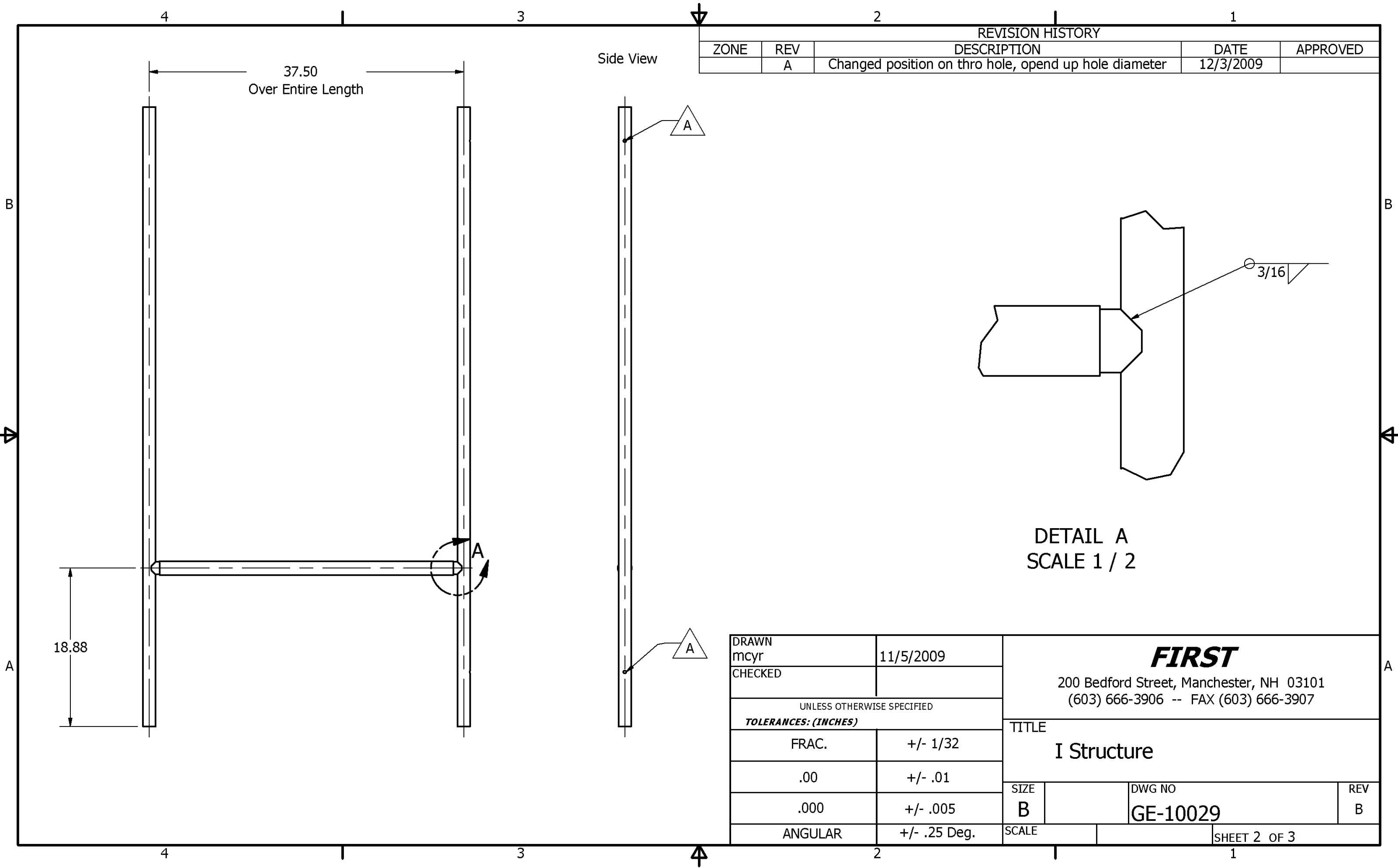
- Notes:
- 1.) To be free of burrs and sharp edges
 - 2.) Plating: zinc with clear chromate
 - 3.) Item 3 must be able to rotate freely after welding and plating

REVISION HISTORY				
ZONE	REV	DESCRIPTION	DATE	APPROVED
	A	See sheet 2, opened up hole diameter	12/3/2009	
	B	see sheet 3	12/11/2009	

Resources		
Resource	Material	Quantity
1	1-1/2" x .083" Wall 1020 CRS DOM Tube	15-1/2 Feet
2	1-5/8" x 16 Gauge Galvanized Steel Line Post (chain link fencing)	32.5 Inches

PARTS LIST			
ITEM	QTY	PART NUMBER	DESCRIPTION
1	2	GE-10029-01	Vertical
2	1	GE-10029-02	Horizontal
3	1	GE-10029-03	Horizontal roller

DRAWN mcy		11/5/2009		<div>FIRST</div> <div>200 Bedford Street, Manchester, NH 03101 (603) 666-3906 -- FAX (603) 666-3907</div>			
CHECKED							
UNLESS OTHERWISE SPECIFIED							
TOLERANCES: (INCHES)				TITLE I Structure			
FRAC.		+/- 1/32					
.00		+/- .01					
.000		+/- .005		SIZE	DWG NO		REV
				B	GE-10029		B
ANGULAR		+/- .25 Deg.		SCALE		SHEET 1 OF 3	



Side View

REVISION HISTORY

ZONE	REV	DESCRIPTION	DATE	APPROVED
	A	Changed position on thro hole, open up hole diameter	12/3/2009	

DETAIL A
SCALE 1 / 2

DRAWN mcy	11/5/2009	<div>FIRST</div> <div>200 Bedford Street, Manchester, NH 03101 (603) 666-3906 -- FAX (603) 666-3907</div>			
CHECKED					
UNLESS OTHERWISE SPECIFIED TOLERANCES: (INCHES)		TITLE I Structure			
FRAC.	+/- 1/32				
.00	+/- .01	SIZE B			
.000	+/- .005				
ANGULAR	+/- .25 Deg.	SCALE		DWG NO GE-10029	REV B
				SHEET 2 OF 3	

